



Welsh Bridge, Shrewsbury, SY3 8LH

£56,539 p.a. (exclusive)



Ground Floor Offices



First Floor Offices

Welsh Bridge, Shrewsbury, SY3 8LH

Summary

- Self contained wing of offices available in Shrewsbury's most iconic and prominent office building.
- Net Internal Area 3,906 sq ft (362.88 m²).
- The offices are available at £56,539 per annum (exclusive).
- The offices have just been comprehensively refurbished to provide open floor space, new carpets and redecoration throughout and LED lighting.
- The offices benefit from multiple air conditioning units on each floor.
- Excellent natural light with South and East facing double glazed windows.
- Two on site secure parking spaces. Two further parking spaces available nearby.
- Short walk to Shrewsbury's Railway and Bus Stations.
- Numerous public car parks within walking distance.
- Nearby occupiers Morris & Co Limited, Hatchers Solicitors, AHR Architects, Theatre Severn, University Centre Shrewsbury and Shrewsbury Colleges Group. An extensive variety of facilities are adjacent including independent and national restaurants and bars.

For further information, contact:

Andrew Birtwistle
01743 276 666 / 07775 703 246
ab@cgpooks.co.uk

James Satoor
07494 328 693 / 01743 276 617
james.satoor@cgpooks.co.uk



Second Floor Offices



Ground Floor Reception

Welsh Bridge, Shrewsbury, SY3 8LH

Description:

This is a unique opportunity to secure office premises within one of Shrewsbury's most recognisable office buildings.

The offices comprise three floors of a three storey extension to the original Welsh Bridge building constructed to house Morris Care. The Morris Care business was sold in 2023 and the offices have become surplus to requirements.

The offices will have their own dedicated entrance directly off Lower Claremont Bank via an imposing double doorway into an internal lobby, with original doors from the HMHS Britannic—sister ship to the Titanic.

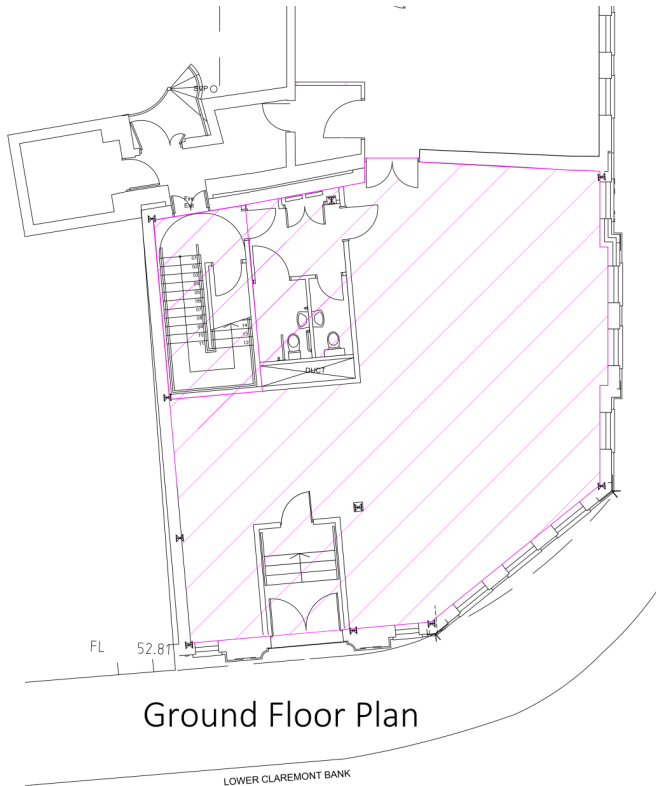
Internally, the offices comprise suspended ceilings, new LED lighting, redecorated plaster and painted walls, raised floors with underfloor trunking and new carpet throughout.

The incoming tenant will be able to erect their own corporate signage on the Lower Claremont Bank elevation within a defined signage 'zone'. Two car spaces will be made available on separate license within the secure and gated rear courtyard. A further two car spaces will be made available on separate license nearby.

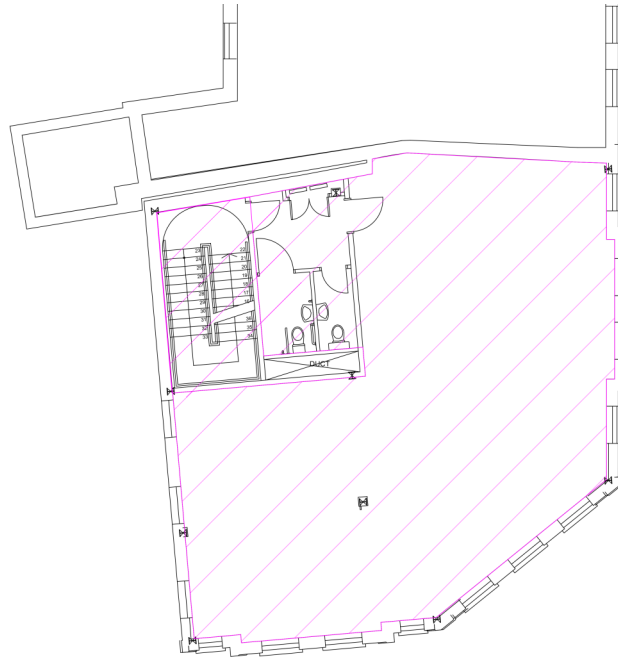
Location:

Shrewsbury is the county town and administrative centre of Shropshire with a population of 80,000 approximately with a catchment extending into Wales. Shrewsbury enjoys excellent road links to the North and South of Wales via the A49 and Telford and Birmingham via the A5 and M54.

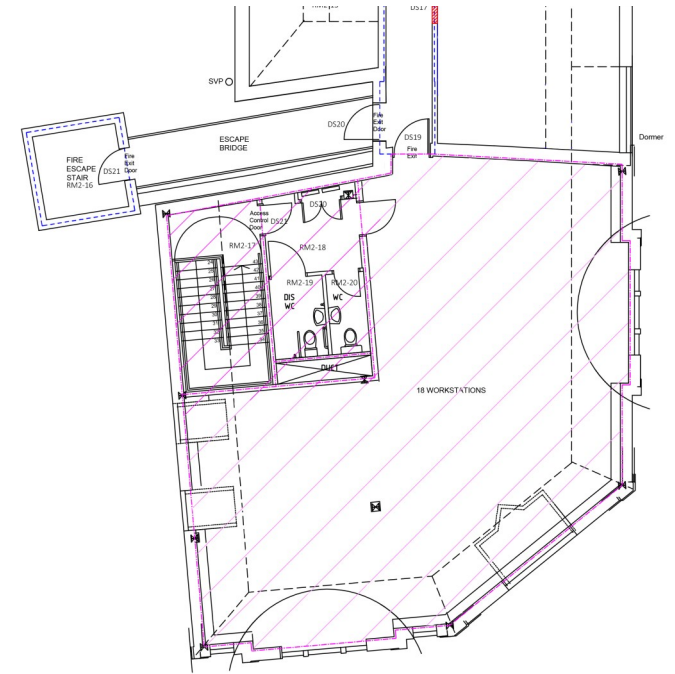
	Manchester 1hr 30 mins	Liverpool 1hr 22mins	Birmingham 1hr 13mins
	Manchester 1hr 18mins	Telford 20 mins	Birmingham 1hr 2mins
	Chester 43 miles	Telford 14.8 miles	Birmingham 47.6 miles



Ground Floor Plan



First Floor Plan



Second Floor Plan

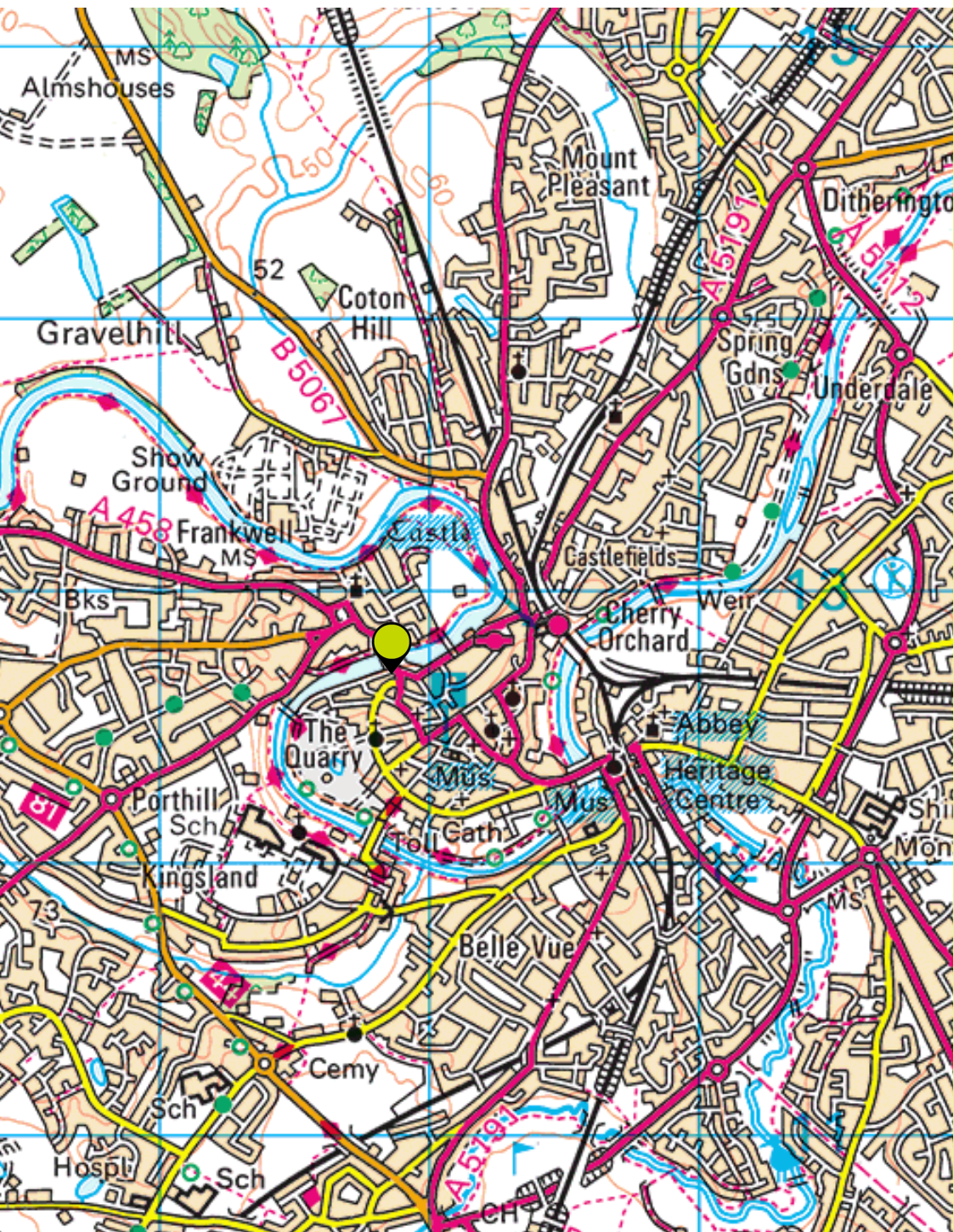
Accommodation

(Measured in accordance with the RICS Code Of Measuring Practice. All measurements are approximate and are on a net internal floor area basis).

Virtual Tour



Floor	Description	Size (sq ft)	Size (m ²)
Ground Floor	Entrance Hall		
Ground Floor	Accessible Toilets		
Ground Floor	Offices	1,212	112.67
First Floor	Offices	1,491	138.48
First Floor	Toilets		
Second Floor	Office	1202.65	111.73
Second Floor	Toilets		
Total		3,906 sq ft	362.88 m²



Welsh Bridge, Shrewsbury, SY3 8LH

Local Authority:

Shropshire Council,
The Shirehall,
Abbey Foregate,
Shrewsbury,
SY2 6ND.
03456 789 000

Planning:

The premises are understood to have an existing use for Class E purposes.

Prospective tenants should rely on their own enquiries with the Planning Authority as to whether planning permission is necessary for their proposed use.

Ratable Value:

To be Assessed

1st April 2023

Energy Performance Rating:

To be Assessed

Deposit:

A deposit of 3-6 month's rent will be required.

References:

The successful applicant will typically need to provide satisfactory references/ company trading accounts.

Anti-money Laundering and Identity Verification:

To comply with anti-money laundering regulations, we are obliged to verify identify and confirm source of funding for all parties leasing or purchasing property. This is in addition to routine references and credit checks.

Fixtures & Fittings:

All items usually classed as tenants' fixtures and fittings, and not mentioned in these details are excluded from the letting.

Costs:

Each party to bear their own legal cost incurred in this transaction.

VAT:

All prices and any rents mentioned in these particulars and any subsequent correspondence are exclusive of VAT if applicable. The landlord has elected to charge VAT on the rent.

Services:

Water, electricity and sewerage connected to the property. There is gas to the building but not currently within the subject demise.

Service Charge:

A service charge will be levied for the cost of common services.

